



THE CAMFIELD – 268m²



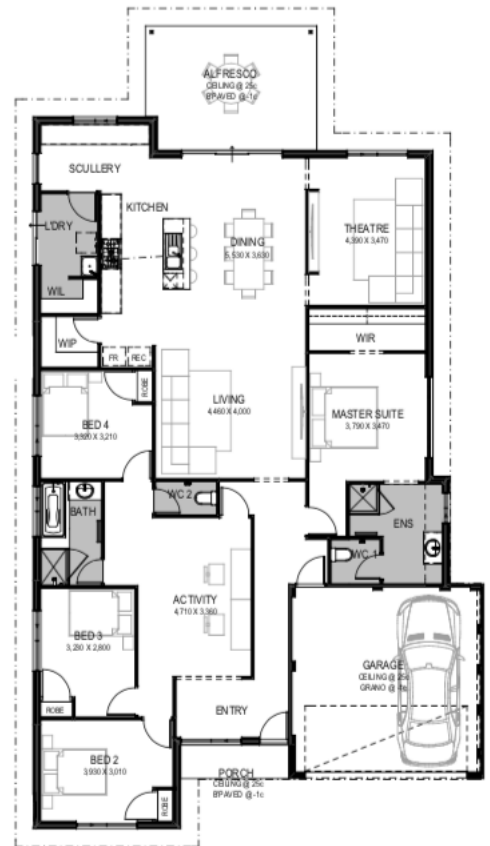
LOT: **TBA** | LOT SIZE: **TBA**m² | FRONTAGE: **15m**

HOUSE FEATURES

Once you enter the grand entry of this big home you have a kids wing on one side with its own activity space and a two car garage on the other side. Walk through the hallway and you're greeted with a huge living room, dining room and chefs kitchen complete with a big scullery & walk-in-pantry. There is also a separate home theatre and large alfresco that connects to the dining space. The Master Suite is in the middle of the home and has a generous walk-in-robe and ensuite.

EXTRA FEATURES

- Fujitsu reverse cycle air conditioner
- High ceilings to living areas, alfresco and garage
- Full internal painting
- Double garage with tilt panel door
- Fisher & Paykel hotplate, oven and range-hood
- Exposed aggregate paving to the alfresco and driveway
- Solid double brick construction
- Hard wearing vinyl flooring to the kitchen, living and dining
- New carpet to other rooms
- Choice of vertical or venetian blinds



HOUSE CONTACT:
SAM PAYNE
0403 681 796



LAND CONTACT:
TOM CARMODY | 08 9473 2311
tom@austinlakes.com.au