



THE MEELUP



LOT 517 | LOT SIZE: 400m² | FRONTAGE: 12.5m

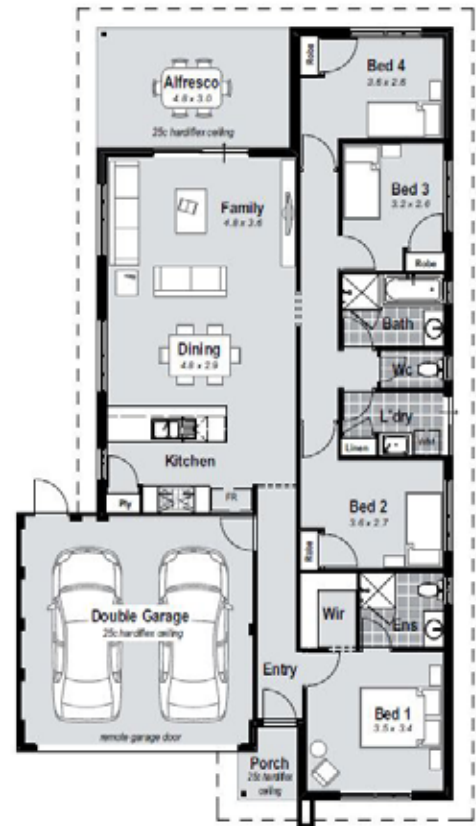
HOUSE FEATURES

The Meelup is designed to suit blocks with a 12.5m frontage. It features a large open plan kitchen, dining and family room area which leads to a spacious alfresco.

The master bedroom includes a huge walk-in robe, and the minor bedrooms are located as a separate wing. This design's clever zoning achieves both flow and privacy.

All Complete Living Series Home Designs are fully finished and include:

- Quality Flooring Throughout
- Window Treatments
- Stone Benchtops to Kitchen
- Internal Wall Painting
- Fully Ducted Reverse Cycle Air Conditioning Throughout
- Westinghouse 900mm Appliances (Oven / Hot Plate / Rangehood)
- Wide Range of Tapware
- Rendered Front Elevation (image for illustrative purposes only)
- and much much more...



HOUSE CONTACT:
ROB PARKER
0408 104 923



LAND CONTACT:
TOM CARMODY | 08 9473 2311
tom@austinlakes.com.au