



THE ST IVES – 218m²



LOT 486 | LOT SIZE: 463m² | FRONTAGE: 15m

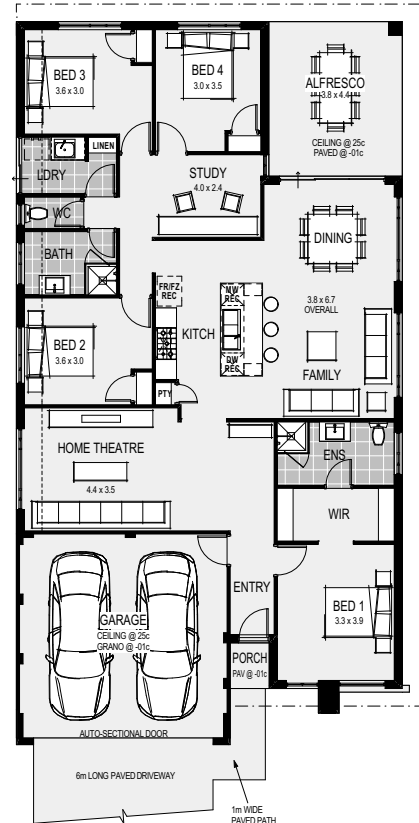
HOUSE FEATURES

\$30,000 DESIGNER KITCHEN

- Huge 1200mm Wide Island Bench
- Stone Benchtops
- European High Gloss Cabinetry
- European High Gloss Pantry
- Lift-up Overhead Cupboards
- Extensive Drawers
- Laminate Pantry
- 900mm Freestanding Stove
- Integrated Rangehood

PLUS MUCH MORE:

- Ford & Doonan Reverse Cycle Air Con
- Advanced LED Downlights Throughout
- Stone Benchtops Throughout
- 450 x 450 Porcelain Floor Tiles
- Loop Pile Carpet
- Blinds Throughout
- Mirrored Robe Sliding Doors



HOUSE CONTACT:
TRISTAN HARVEY
0409 084 845



LAND CONTACT:
TOM CARMODY | 08 9473 2311
tom@austinlakes.com.au