

AUSTIN LAKES

austinlakes.com.au

FROM **\$367,908***
HOUSE & LAND PACKAGE



BELLS BEACH – 218m²



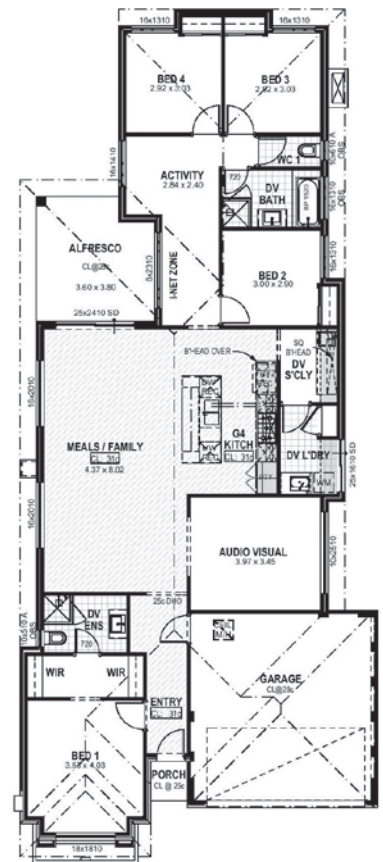
LOT: **463** | LOT SIZE: **400m²** | FRONTAGE: **12.5m**
LOT: **606** | LOT SIZE: **388m²** | FRONTAGE: **12.5m**

HOUSE FEATURES

There are some stand-out features in this generous family home! For starters, check out the double walk-in-robe off the master bedroom, an activity room uniting the other three bedrooms, and a scullery tucked behind the kitchen.

Infinity Specification

- Gourmet Kitchen with European Inspired Fittings
- Stone Benchtops Throughout
- Panasonic Ducted Reverse Cycle Air Conditioning
- Advanced LED Downlights Throughout
- 450 x 450 Porcelain Floor Tiles
- Loop Pile Carpet
- Blinds Throughout
- Mirrored Robe Sliding Doors
- Included elevation



HOUSE CONTACT:
ANTHONY | 0438 887 228



LAND CONTACT:
TOM CARMODY | 08 9473 2311
tom@austinlakes.com.au

While best endeavours have been used to provide information in this publication that is true and accurate, Wolfdene and related entities accept no responsibility and disclaim all liability in respect to errors or inaccuracies it may contain. Prospective purchasers should make their own inquiries to verify the information contained herein. All copy, illustrations and images are depictions for presentation purposes only. Plans, specifications, renders and prices are subject to change and availability. © Wolfdene Pty Ltd 2020.

