

AUSTIN LAKES

austinlakes.com.au

\$452,990*

HOUSE & LAND PACKAGE



LONGREACH – 640m²



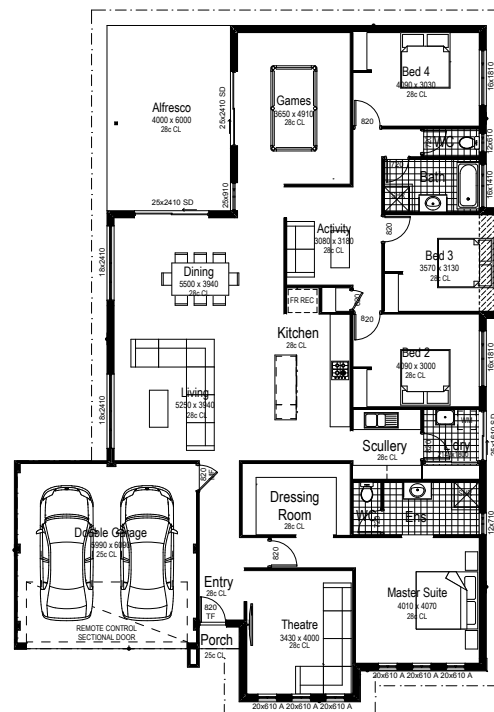
LOT: 967 | LOT SIZE: 640m² | FRONTAGE: 20m

HOUSE FEATURES

Wow! This truly amazing home comes with sprawling living spaces, including a games room opening to a large alfresco, AND a theatre room, AND an activity area connecting three bedrooms at the rear. Other special spaces include a scullery and a dressing room. This one really has it all!

The Longreach package includes:

- Quality Floor Coverings
- Colorbond Roofing, Gutters and Fascia
- 20mm Essastone Kitchen Benchtops
- Window Treatments
- Paved Alfresco with Steel Posts
- Paving to Driveway and Porch
- Solid Coritech Feature
- Front Entry Door
- Double Garage with Auto Sectional Door
- Stainless Steel Electric Oven, Gas Hotplate, and Bowl Sink
- Availability of Double Glazing Upgrade



Terms and conditions apply. For full details please visit b1homes.com.au/terms-conditions/. BC14299



HOUSE CONTACT:
GRANT WILLIS
0400 505 511



LAND CONTACT:
TOM CARMODY | 08 9473 2311
tom@austinlakes.com.au

While best endeavours have been used to provide information in this publication that is true and accurate, Wolfdene and related entities accept no responsibility and disclaim all liability in respect to errors or inaccuracies it may contain. Prospective purchasers should make their own inquiries to verify the information contained herein. All copy, illustrations and images are depictions for presentation purposes only. Plans, specifications, renders and prices are subject to change and availability. © Wolfdene Pty Ltd 2020.

