

AUSTIN LAKES

austinlakes.com.au

FROM **\$386,990***
HOUSE & LAND PACKAGE



AMALFI - 153m²



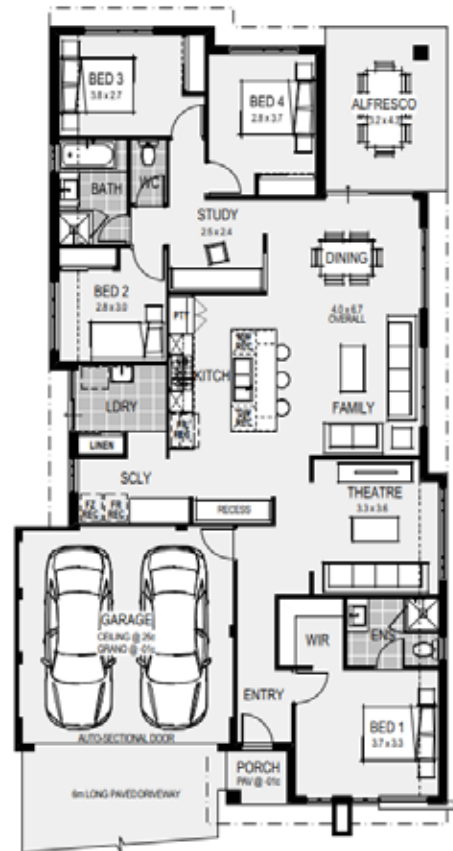
Discuss lots with a **12.5m frontage** available for this package.

HOUSE FEATURES

The kids will love this home with their bedrooms located together at the rear of the home, all joined by a study area. When it's family time, there's no better place than the theatre, or the open family area with a central kitchen and tucked-away scullery.

- European fixtures and fittings
- 900mm appliances
- L.E.D. lights
- Framed shower screens
- Choice of five elevations

* Please visit homegroup.com.au for more information.



HOUSE CONTACT:
DYLAN D'ACCAMPO | 0448 252 007
dylan.daccampo@homegroup.com.au



LAND CONTACT:
TOM CARMODY | 08 9473 2311
tom@austinlakes.com.au

While best endeavours have been used to provide information in this publication that is true and accurate, Wolfdene and related entities accept no responsibility and disclaim all liability in respect to errors or inaccuracies it may contain. Prospective purchasers should make their own inquiries to verify the information contained herein. All copy, illustrations and images are depictions for presentation purposes only. Plans, specifications, renders and prices are subject to change and availability. © Wolfdene Pty Ltd 2020.

