

AUSTIN LAKES

austinlakes.com.au

FROM **\$447,000***
HOUSE & LAND PACKAGE



NEBULA - 232m²

4 **2** **2**

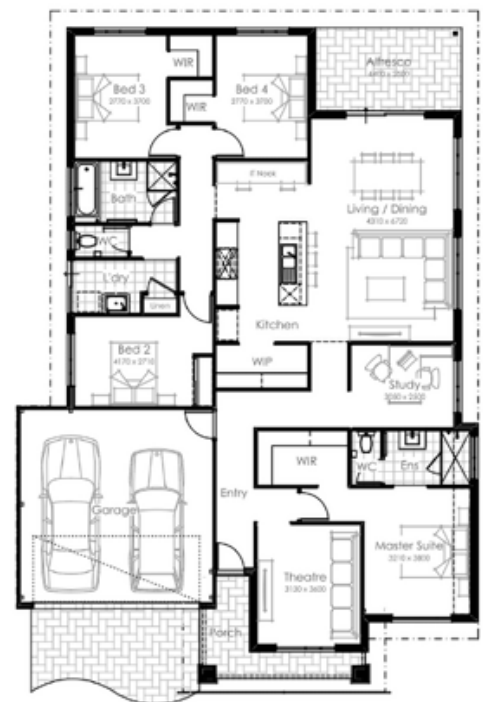
Discuss lots with a **15m frontage** available for this package.

HOUSE FEATURES

There's so much to love about this clever design, but especially the large haven-like adult space at the front, and the central kitchen integrating the family areas.

- 30c internal ceiling throughout (27c to garage, alfresco, porch/verandah if applicable)
- Reverse cycle air-conditioning system
- One 7w HPM LED downlight in lieu of one standard light bayonet per room
- Ten additional 7w HPM LED downlights to be allocated at Prestart
- Vertical, slimline or roller blinds from builder's standard range throughout (excluding wet areas)
- Carpet from builder's standard range to all bedrooms, theatre and study (if applicable)
- Crosby Tiles titanium non-rectified porcelain floor tiling package from builder's standard range to main living (maximum 600mm x 600mm tiles)

* Price may vary and is subject to change. Please visit newgenerationhomes.com.au for details and more information.



**New
Generation
Homes**



HOUSE CONTACT:
MATTHEW DIAMOND | 0411 944 858
MatthewD@summithomes.com.au



LAND CONTACT:
TOM CARMODY | 08 9473 2311
tom@austinlakes.com.au

While best endeavours have been used to provide information in this publication that is true and accurate, Wolfdene and related entities accept no responsibility and disclaim all liability in respect to errors or inaccuracies it may contain. Prospective purchasers should make their own inquiries to verify the information contained herein. All copy, illustrations and images are depictions for presentation purposes only. Plans, specifications, renders and prices are subject to change and availability. © Wolfdene Pty Ltd 2020.

Wolfdene