

AUSTIN LAKES

austinlakes.com.au

FROM **\$487,990***
HOUSE & LAND PACKAGE



THE HILLIER - 544m²



Discuss which lots with a **15m frontage** are available for this package

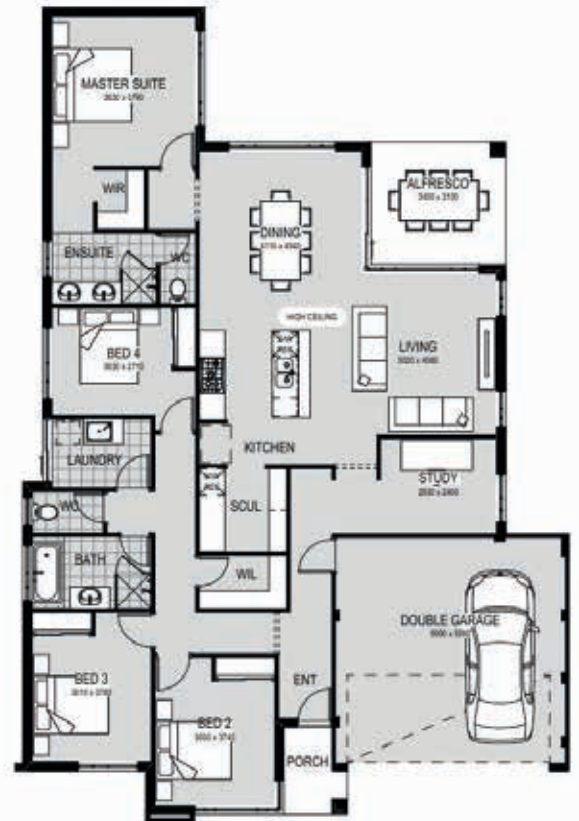
HOUSE FEATURES

This home "The Hillier" is one of our brand new homes in our latest design brief! This home features premium inclusions standard from our "Choice Specification" as well as a number of bolt on items to compliment your new home!

Some standout items to expect are:

- Double Glazed Windows Throughout!
- Daikin Ducted Reverse Cycle A/C!
- 600 x 300 wall tiles to wet areas!
- Essastone Benchtops to Kitchen!
- Premium Tapware!
- 31c high ceilings to Living areas and 28c SUV ceilings to Garage!
- Premium feature elevation as shown!
- Lifetime structural warranty!
- Fixed Siteworks agreement!
- Backed by one of the largest building organisations Australia wide (Sumitomo Forrestry)

* Price may vary and is subject to change. Please visit redinkhomes.com.au for details and more information.



HOUSE CONTACT:

DEAN WHITTOME | 0400 956 043
dean@redinksouthwest.com.au



LAND CONTACT:

TOM CARMODY | 08 9473 2311
tom@austinlakes.com.au

While best endeavours have been used to provide information in this publication that is true and accurate, Wolfdene and related entities accept no responsibility and disclaim all liability in respect to errors or inaccuracies it may contain. Prospective purchasers should make their own inquiries to verify the information contained herein. All copy, illustrations and images are depictions for presentation purposes only. Plans, specifications, renders and prices are subject to change and availability. © Wolfdene Pty Ltd 2020.

